

**2003年3月期
連結決算補足資料**

Consolidated Financial Summary
For the Fiscal Year Ended March 31, 2003

2003年5月8日
May 8, 2003

伊藤忠テクノサイエンス株式会社
ITOCHU TECHNO-SCIENCE Corporation

注:本資料に記載されている業績見通しは様々な要因により変化することがあり、
実際の業績を確約するものではありません。

Note: Forecasts contained in this report may be subject to change due to a wide range of factors, and no
warranty is made explicitly or implicitly regarding their attainability.

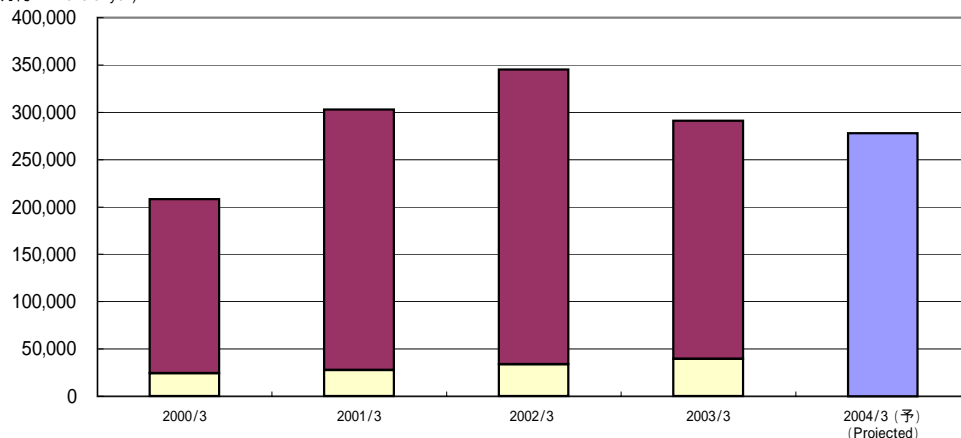
1. 業績概況 Operating Results

(単位: 百万円 Millions of yen)

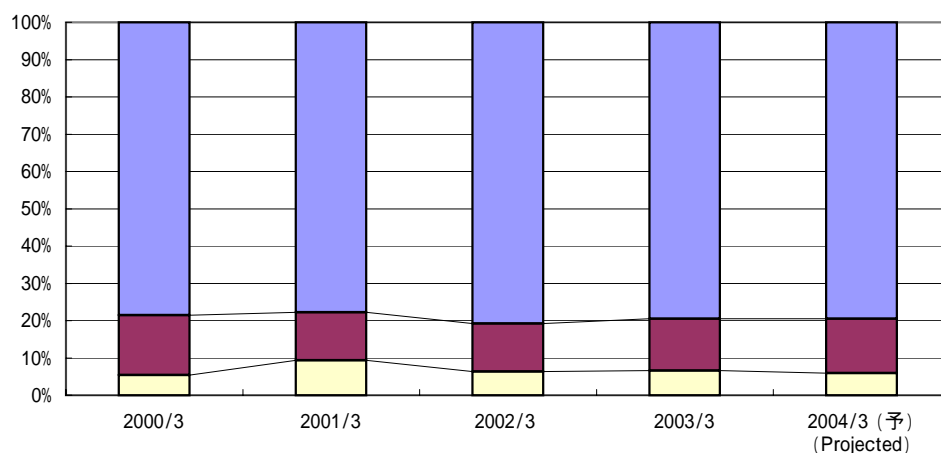
	2000/3	2001/3	2002/3	2003/3	2004/3 (予) (Projected)	2003/9 (予) (Projected)
売上高 Total Revenue	208,206	302,867	345,303	290,998	117,000	278,000
対前年同期増減率 Y-Y change (%)	+18.7%	+45.5%	+14.0%	-15.7%	-5.5%	-4.5%
システム System	183,812	275,269	311,338	251,605	-	-
対売上高構成比 % of Total Revenue	88.3%	90.9%	90.2%	86.5%	-	-
対前年同期増減率 Y-Y change (%)	+17.4%	+49.8%	+13.1%	-19.2%	-	-
サポート Support	24,393	27,598	33,965	39,392	-	-
売上構成比率 % of Total Revenue	11.7%	9.1%	9.8%	13.5%	-	-
対前年同期増減率 Y-Y change (%)	+30.1%	+13.1%	+23.1%	+16.0%	-	-
売上原価 Cost of Sales	163,463	235,456	278,951	231,279	91,600	221,000
対売上高構成比 % of Total Revenue (%)	78.5%	77.7%	80.8%	79.5%	78.3%	79.5%
対前年同期増減率 Y-Y change (%)	+19.9%	+44.0%	+18.5%	-17.1%	-7.4%	-4.4%
売上総利益 Gross Profit	44,742	67,411	66,351	59,718	25,400	57,000
対売上高構成比 % of Total Revenue (%)	21.5%	22.3%	19.2%	20.5%	21.7%	20.5%
対前年同期増減率 Y-Y change (%)	+14.6%	+50.7%	-1.6%	-10.0%	+2.2%	-4.6%
販売費および一般管理費 SG&A Expenses	33,423	39,130	44,541	40,385	20,200	40,400
対売上高構成比 % of Total Revenue (%)	16.1%	12.9%	12.9%	13.9%	17.3%	14.5%
対前年同期増減率 Y-Y change (%)	+14.0%	+17.1%	+13.8%	-9.3%	-3.3%	+0.0%
営業利益 Operating Income	11,319	28,280	21,810	19,332	5,200	16,500
対売上高構成比 % of Total Revenue (%)	5.4%	9.4%	6.3%	6.6%	4.4%	5.9%
対前年同期増減率 Y-Y change (%)	+16.5%	+149.8%	-22.9%	-11.4%	+31.4%	-14.7%
システム(消去前) System (before eliminations)	8,692	23,530	13,658	7,804	-	-
サポート(消去前) Support (before eliminations)	7,638	11,781	14,565	16,700	-	-
経常利益 Ordinary Income	10,914	27,476	20,672	18,096	4,800	16,100
対売上高構成比 % of Total Revenue (%)	5.2%	9.1%	6.0%	6.2%	4.1%	5.8%
対前年同期増減率 Y-Y change (%)	+24.4%	+151.7%	-24.8%	-12.5%	+42.7%	-11.0%
税金等調整前当期利益 Income before Income Taxes	10,803	26,884	22,213	17,073	4,800	15,700
対売上高構成比 % of Total Revenue (%)	5.2%	8.9%	6.4%	5.9%	4.1%	5.6%
対前年同期増減率 Y-Y change (%)	+22.3%	+148.8%	-17.4%	-23.1%	+69.2%	-8.0%
当期純利益 Net Income	6,148	14,842	12,089	8,766	2,600	8,700
対売上高構成比 % of Total Revenue (%)	3.0%	4.9%	3.5%	3.0%	2.2%	3.1%
対前年同期増減率 Y-Y change (%)	+106.7%	+141.4%	-18.5%	-27.5%	+125.2%	-0.8%

売上高 Revenue

(百万円 Millions of yen)

■ システム System
□ サポート Support


コストおよび営業利益の構成比 Shares of Costs and Operating Income

■ 売上原価 Cost of Sales
■ 販売費および一般管理費 SG&A Expenses
□ 営業利益 Operating Income


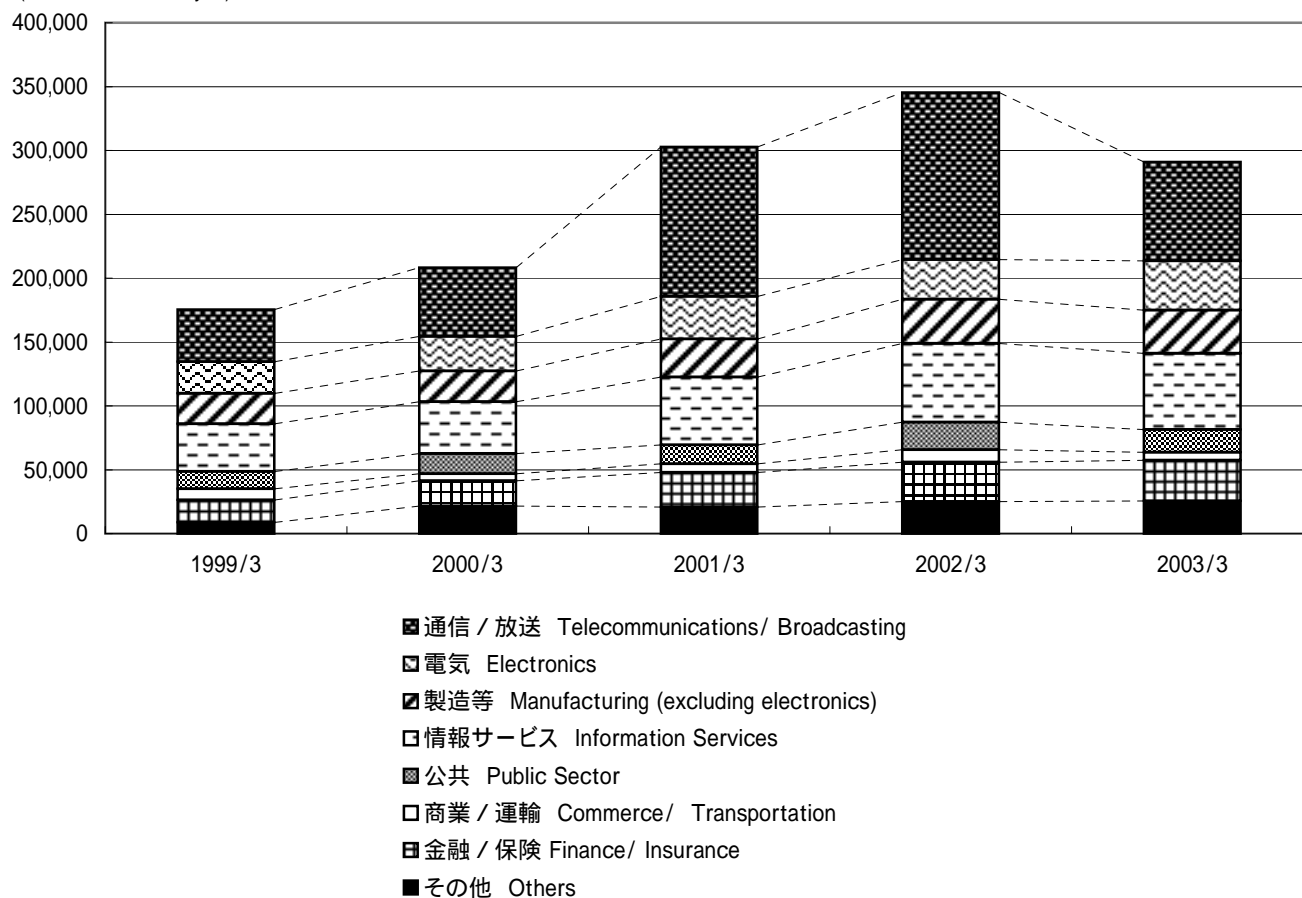
2. 業種別売上高 Revenue by Industry

(単位: 百万円 Millions of yen)

	1999/3	2000/3	2001/3	2002/3	2003/3
通信 / 放送 Telecommunications/ Broadcasting	40,832	53,866	117,222	130,787	77,395
構成比 % of Total Revenue (%)	23.3%	25.9%	38.7%	37.9%	26.6%
対前年同期増減率 Y-Y change (%)	+53.0%	+31.9%	+117.6%	+11.6%	-40.8%
電気 Electronics	24,666	27,124	33,386	31,166	38,576
構成比 % of Total Revenue (%)	14.1%	13.0%	11.0%	9.0%	13.3%
対前年同期増減率 Y-Y change (%)	-3.7%	+10.0%	+23.1%	-6.6%	+23.8%
製造等 Manufacturing (excluding electronics)	23,892	23,970	29,688	34,512	33,917
構成比 % of Total Revenue (%)	13.6%	11.5%	9.8%	10.0%	11.7%
対前年同期増減率 Y-Y change (%)	-3.9%	+0.3%	+23.9%	+16.2%	-1.7%
情報サービス Information Services	37,307	40,536	53,059	61,707	59,704
構成比 % of Total Revenue (%)	21.3%	19.5%	17.5%	17.9%	20.5%
対前年同期増減率 Y-Y change (%)	+22.5%	+8.7%	+30.9%	+16.3%	-3.2%
公共 Public Sector	13,469	15,853	14,973	21,578	17,793
構成比 % of Total Revenue (%)	7.7%	7.6%	5.0%	6.2%	6.1%
対前年同期増減率 Y-Y change (%)	+22.2%	+17.7%	-5.6%	+44.1%	-17.5%
商業 / 運輸 Commerce/ Transportation	8,881	5,523	6,664	9,677	6,257
構成比 % of Total Revenue (%)	5.1%	2.7%	2.2%	2.8%	2.2%
対前年同期増減率 Y-Y change (%)	+122.6%	-37.8%	+20.7%	+45.2%	-35.3%
金融 / 保険 Finance/ Insurance	17,549	19,860	27,176	30,916	31,841
構成比 % of Total Revenue (%)	10.0%	9.5%	9.0%	9.0%	10.9%
対前年同期増減率 Y-Y change (%)	+17.3%	+13.2%	+36.8%	+13.8%	+3.0%
その他 Others	8,780	21,470	20,696	24,957	25,511
構成比 % of Total Revenue (%)	5.0%	10.3%	6.8%	7.2%	8.7%
対前年同期増減率 Y-Y change (%)	+2.8%	+144.5%	-3.6%	+20.6%	+2.2%
合計 Total	175,379	208,206	302,867	345,303	290,998
構成比 % of Total Revenue (%)	100.0%	100.0%	100.0%	100.0%	100.0%
対前年同期増減率 Y-Y change (%)	+20.0%	+18.7%	+45.5%	+14.0%	-15.7%

業種別売上高 Revenue by Industry

(百万円 Millions of yen)



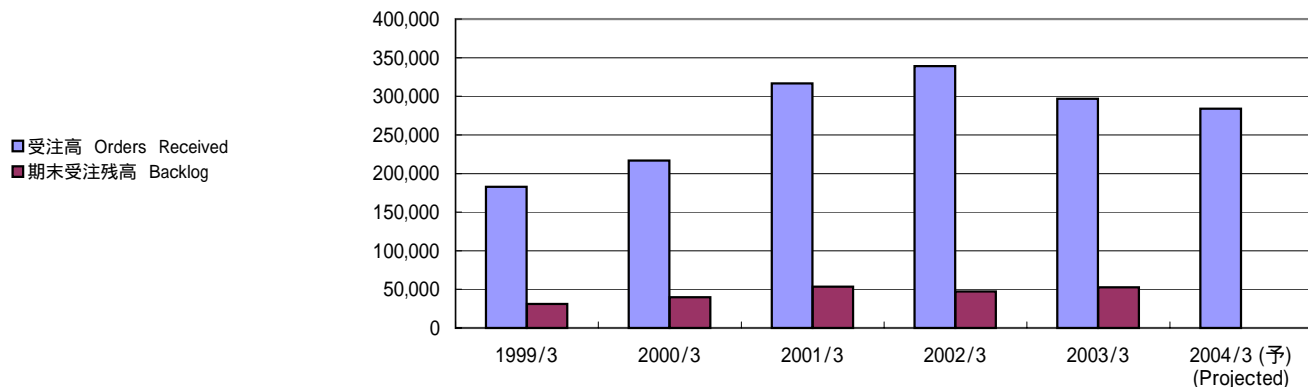
3. 受注高と受注残高 Orders and Backlog

(単位:百万円 Millions of yen)

	1999/3	2000/3	2001/3	2002/3	2003/3	2004/3 (予) (Projected)	2003/9 (予) (Projected)
受注高 Orders Received	182,680	216,774	316,511	339,040	296,729	126,000	284,000
対前年同期増減率 Y-Y change (%)	-	+18.7%	+46.0%	+7.1%	-12.5%	-12.1%	-4.3%
システム System	161,932	189,100	284,623	307,149	256,683	-	-
構成比 Share (%)	88.6%	87.2%	89.9%	90.6%	86.5%	-	-
対前年同期増減率 Y-Y change (%)	-	+16.8%	+50.5%	+7.9%	-16.4%	-	-
サポート Support	20,748	27,674	31,887	31,890	40,046	-	-
構成比 Share (%)	11.4%	12.8%	10.1%	9.4%	13.5%	-	-
対前年同期増減率 Y-Y change (%)	-	+33.4%	+15.2%	+0.0%	+25.6%	-	-
期末受注残高 Backlog	31,151	39,719	53,362	47,098	52,830	-	-
システム System	23,150	28,438	37,791	33,602	38,680	-	-
構成比 Share (%)	74.3%	71.6%	70.8%	71.3%	73.2%	-	-
サポート Support	8,000	11,281	15,570	13,496	14,150	-	-
構成比 Share (%)	25.7%	28.4%	29.2%	28.7%	26.8%	-	-

受注高および受注残高 Orders Received and Backlog

(百万円 Millions of yen)



4. 従業員数の推移 Number of Employees

(単位:人 People)

	1998/3	1999/3	2000/3	2001/3	2002/3	2003/3
CTCグループ全従業員 CTC Group Employees	1,900	2,194	2,478	2,772	3,178	3,403
うちシステムエンジニア System Engineers	519	675	772	935	1,118	1,340
外部要員 Outside Staff	624	997	1,202	1,965	2,457	1,854
うちシステムエンジニア System Engineers	315	541	603	1,141	1,564	1,119
CTCグループ総人員 Total	2,524	3,191	3,680	4,737	5,635	5,257
うちシステムエンジニア System Engineers	834	1,216	1,375	2,076	2,682	2,459

注: 従業員数は各期末時点の人員です。

Note: Number of employees at the end of each fiscal year.

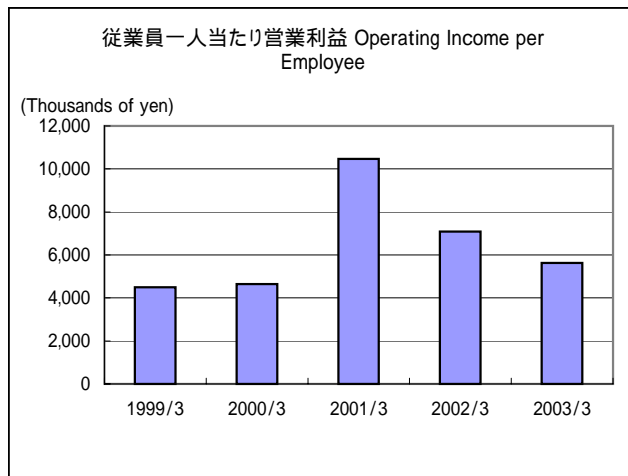
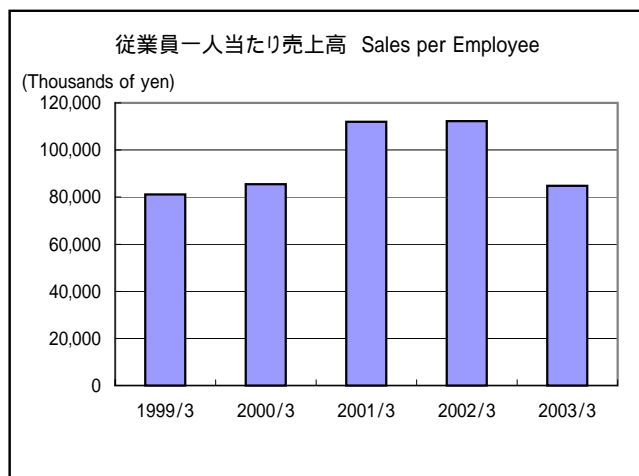
5. 生産性 Productivity

(単位:千円 Thousands of yen)

	1999/3	2000/3	2001/3	2002/3	2003/3
従業員一人当たり売上高 Revenue per Employee	81,138	85,506	112,028	112,312	84,740
従業員一人当たり営業利益 Operating Income per Employees	4,496	4,649	10,461	7,093	5,629

注:期首・期末平均従業員数で算出しています。

Note: Figures were calculated by averaging the number of employees at the beginning and the end of fiscal years.



6. 設備投資と減価償却費 Capital Investment and Depreciation

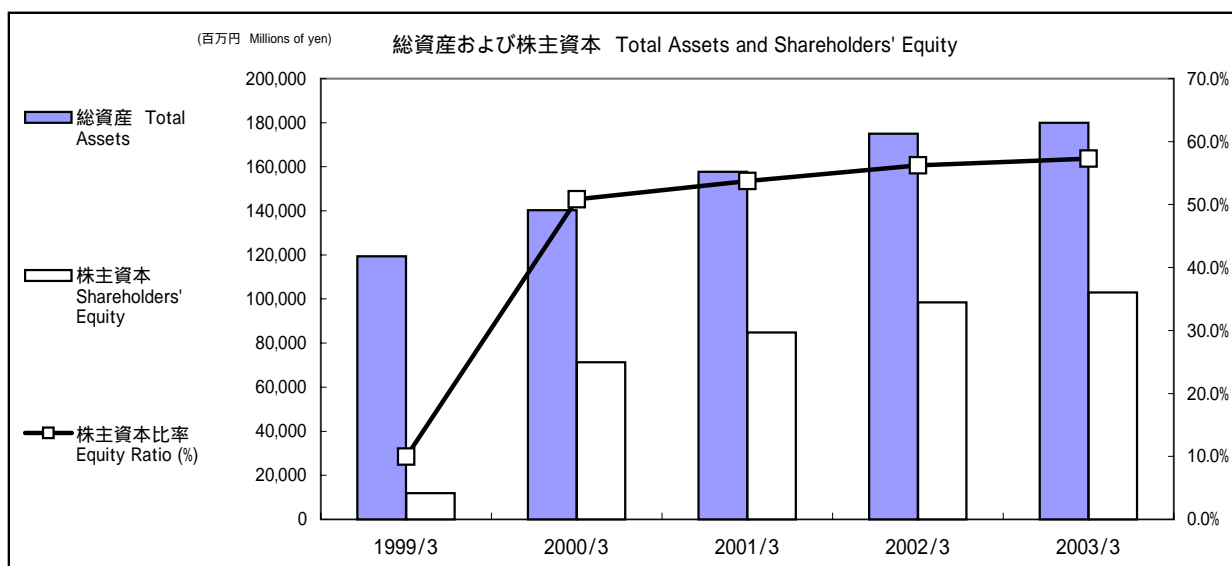
(単位:百万円 Millions of yen)

	2000/3	2001/3	2002/3	2003/3
設備投資額 Capital Investment	1,301	2,261	2,211	1,115
減価償却費 Depreciation	1,249	1,544	1,829	1,871

7. 総資産および株主資本 Total Assets and Shareholders' Equity

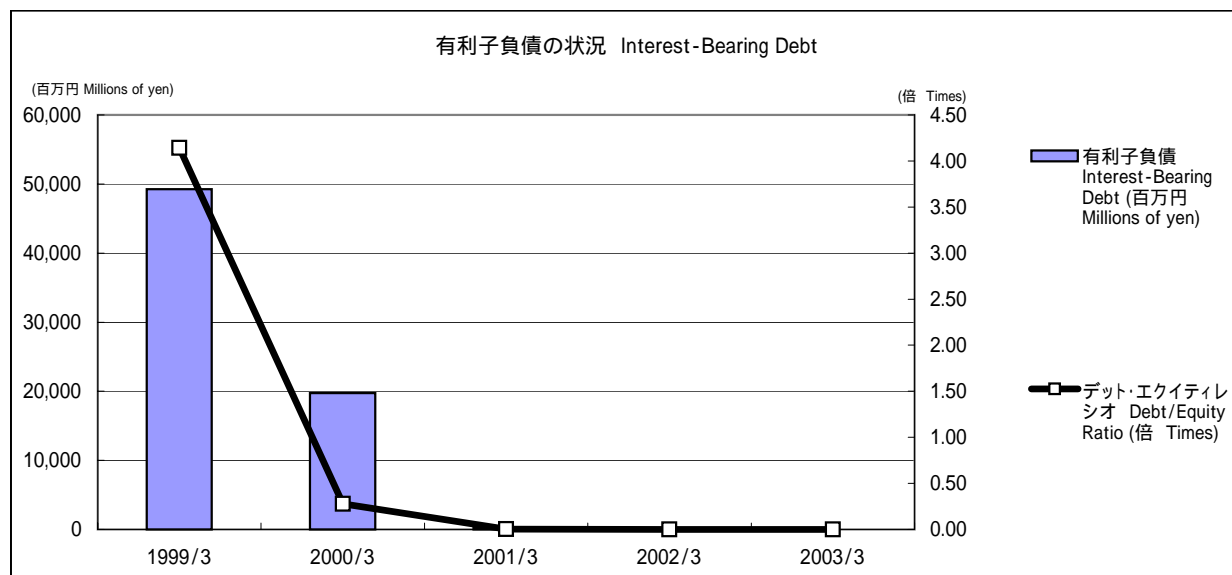
(単位: 百万円 Millions of yen)

	1999/3	2000/3	2001/3	2002/3	2003/3
総資産 Total Assets	119,398	140,322	157,797	174,982	179,918
株主資本 Shareholders' Equity	11,887	71,340	84,786	98,414	103,032
株主資本比率 Equity Ratio (%)	10.0%	50.8%	53.7%	56.2%	57.3%



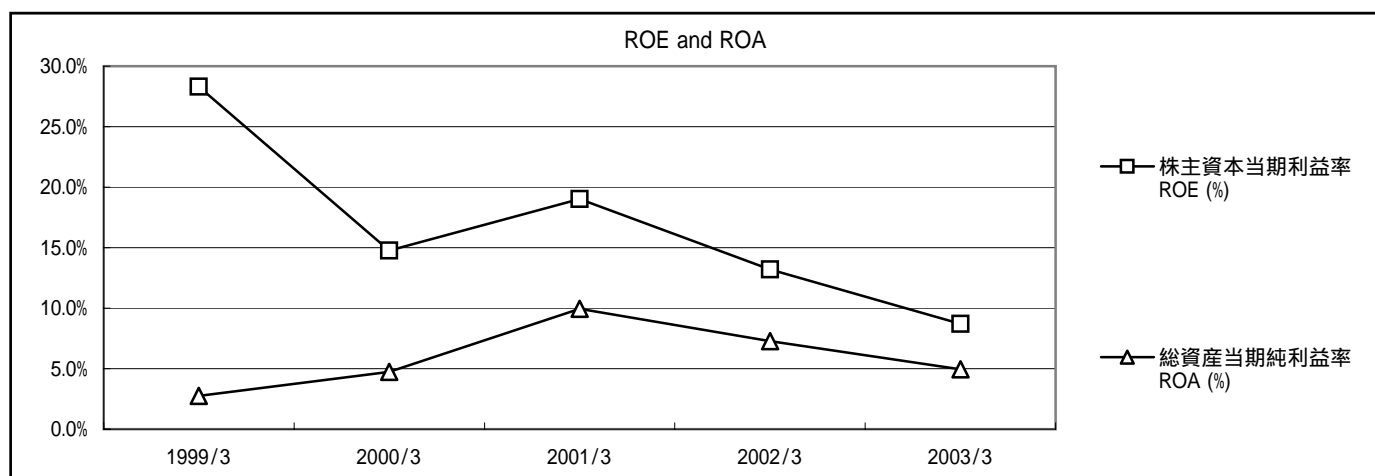
8. 有利子負債の状況 Interest-Bearing Debt

	1999/3	2000/3	2001/3	2002/3	2003/3
有利子負債 Interest-Bearing Debt (百万円 Millions of yen)	49,240	19,744	343	170	0
デット・エクイティレシオ Debt/Equity Ratio (倍 Times)	4.14	0.28	0.00	0.00	0.00



9. その他の指標 Other Indicators

	1999/3	2000/3	2001/3	2002/3	2003/3
株主資本当期利益率 ROE (%)	28.3%	14.8%	19.0%	13.2%	8.7%
総資産当期純利益率 ROA (%)	2.8%	4.7%	10.0%	7.3%	4.9%



(単位: 円 Yen)

	1999/3	2000/3	2001/3	2002/3	2003/3
一株当たり当期純利益 Net Income per Share	165.22	328.02	241.34	196.58	140.94
一株当たり株主資本 Equity per Share	660.39	3,480.03	1,378.65	1,600.25	1,674.36

株式分割履歴

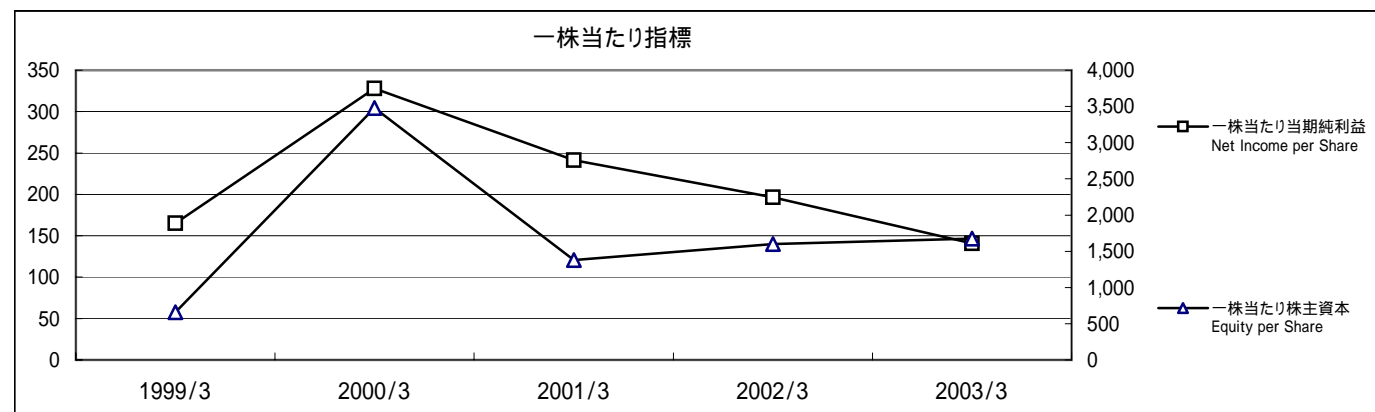
1998年12月31日に1,000円額面株式1株を50円額面株式30株に分割。

2000年8月18日に額面普通株式1株を3株に分割。

History of Stock Splits:

December 31, 1998: One share with a par value of ¥1,000 split into 30 shares with a par value of ¥50.

August 18, 2000: One common, par value share split into three shares



< 参考1 > 連結四半期情報 Quarterly Operating Results
1. 業績概況 Operating Results

(単位:百万円 Millions of yen)

	2002年3月期 Fiscal Year ending March 31, 2002				2003年3月期 Fiscal Year ending March 31, 2003			
	第1四半期 1st Q	第2四半期 2nd Q	第3四半期 3rd Q	第4四半期 4th Q	第1四半期 1st Q	第2四半期 2nd Q	第3四半期 3rd Q	第4四半期 4th Q
売上高 Total Revenue	72,864	90,854	78,555	103,030	55,001	68,767	65,664	101,563
対前年同期増減率 Y-Y Change (%)	+32.7%	+14.2%	+5.7%	+9.5%	-24.5%	-24.3%	-16.4%	-1.4%
システム System	65,523	81,938	70,208	93,668	45,962	58,661	55,904	91,077
対売上高構成比 % of Total Revenue	89.9%	90.2%	89.4%	90.9%	83.6%	85.3%	85.1%	89.7%
対前年同期増減率 Y-Y Change (%)	+33.4%	+12.5%	+4.4%	+8.9%	-29.9%	-28.4%	-20.4%	-2.8%
サポート Support	7,340	8,915	8,347	9,361	9,039	10,106	9,760	10,486
対売上高構成比 % of Total Revenue	10.1%	9.8%	10.6%	9.1%	16.4%	14.7%	14.9%	10.3%
対前年同期増減率 Y-Y Change (%)	+27.1%	+32.0%	+18.9%	+16.4%	+23.1%	+13.4%	+16.9%	+12.0%
売上原価 Cost of Sales	58,285	70,493	62,598	87,574	43,250	55,669	50,577	81,782
対売上高構成比 % of Total Revenue	80.0%	77.6%	79.7%	85.0%	78.6%	81.0%	77.0%	80.5%
対前年同期増減率 Y-Y Change (%)	+37.2%	+16.2%	+11.9%	+14.6%	-25.8%	-21.0%	-19.2%	-6.6%
売上総利益 Gross Profit	14,578	20,360	15,957	15,455	11,751	13,098	15,087	19,780
対売上高構成比 % of Total Revenue	20.0%	22.4%	20.3%	15.0%	21.4%	19.0%	23.0%	19.5%
対前年同期増減率 Y-Y Change (%)	+17.3%	+7.6%	-13.2%	-12.6%	-19.4%	-35.7%	-5.4%	+28.0%
販売費および一般管理費 SG&A Expenses	10,737	11,816	10,757	11,230	10,166	10,727	9,140	10,350
対売上高構成比 % of Total Revenue	14.7%	13.0%	13.7%	10.9%	18.5%	15.6%	13.9%	10.2%
対前年同期増減率 Y-Y Change (%)	+12.2%	+31.6%	+9.6%	+4.3%	-5.3%	-9.2%	-15.0%	-7.8%
営業利益 Operating Income	3,841	8,543	5,199	4,225	1,584	2,370	5,947	9,429
対売上高構成比 % of Total Revenue	5.3%	9.4%	6.6%	4.1%	2.9%	3.4%	9.1%	9.3%
対前年同期増減率 Y-Y Change (%)	+34.2%	-14.0%	-39.2%	-38.9%	-58.7%	-72.3%	+14.4%	+123.2%
システム(消去前) System (before elimination)	2,909	5,936	3,587	1,225	-169	-1,350	3,062	6,262
サポート(消去前) Support (before elimination)	3,050	3,815	3,236	*4,462	3,142	4,879	3,954	4,723
経常利益 Ordinary Income	3,687	8,409	4,914	3,660	1,366	1,996	5,781	8,952
対売上高構成比 % of Total Revenue	5.1%	9.3%	6.3%	3.6%	2.5%	2.9%	8.8%	8.8%
対前年同期増減率 Y-Y Change (%)	+54.8%	-18.6%	-39.9%	-44.4%	-62.9%	-76.3%	+17.7%	+144.5%
税金等調整前当期純利益 Income before Income taxes	3,685	9,071	4,880	4,575	1,358	1,479	5,733	8,502
対売上高構成比 % of Total Revenue	5.1%	10.0%	6.2%	4.4%	2.5%	2.2%	8.7%	8.4%
対前年同期増減率 Y-Y Change (%)	+47.9%	-6.9%	-40.2%	-29.4%	-63.2%	-83.7%	+17.5%	+85.8%
当期純利益 Net Income	2,027	4,991	2,701	2,368	635	519	3,106	4,505
対売上高構成比 % of Total Revenue	2.8%	5.5%	3.4%	2.3%	1.2%	0.8%	4.7%	4.4%
対前年同期増減率 Y-Y Change (%)	+48.4%	-7.3%	-41.6%	-31.7%	-68.7%	-89.6%	+15.0%	+90.2%

*過去に記載した金額に誤りがありましたので訂正いたしました。

2. 受注高と受注残高 Orders and Backlog

(単位:百万円 Millions of yen)

	2002年3月期 Fiscal Year ending March 31, 2002				2003年3月期 Fiscal Year ending March 31, 2003			
	第1四半期 1st Q	第2四半期 2nd Q	第3四半期 3rd Q	第4四半期 4th Q	第1四半期 1st Q	第2四半期 2nd Q	第3四半期 3rd Q	第4四半期 4th Q
受注高 Orders Received	81,232	97,371	73,936	86,499	67,695	75,667	64,994	88,372
対前年同期増減率 Y-Y Change (%)	+23.3%	+7.3%	-6.0%	+6.4%	-16.7%	-22.3%	-12.1%	+2.2%
システム System	75,437	87,253	67,940	76,518	52,253	66,382	57,714	80,333
構成比 Share (%)	92.9%	89.6%	91.9%	88.5%	77.2%	87.7%	88.8%	90.9%
対前年同期増減率 Y-Y Change (%)	+27.0%	+5.0%	-7.1%	+10.9%	-30.7%	-23.9%	-15.1%	+5.0%
サポート Support	5,795	10,117	5,996	9,980	15,442	9,284	7,279	8,038
構成比 Share (%)	7.1%	10.4%	8.1%	11.5%	22.8%	12.3%	11.2%	9.1%
対前年同期増減率 Y-Y Change (%)	-10.8%	+32.4%	+9.8%	-18.8%	+166.5%	-8.2%	+21.4%	-19.5%
受注残高 Backlog	61,730	68,247	63,628	47,098	59,792	66,692	66,021	52,830
システム System	47,705	53,020	50,752	33,602	39,892	47,614	49,423	38,680
構成比 Share (%)	77.3%	77.7%	79.8%	71.3%	66.7%	71.4%	74.9%	73.2%
サポート Support	14,024	15,226	12,876	13,496	19,899	19,077	16,597	14,150
構成比 Share (%)	22.7%	22.3%	20.2%	28.7%	33.3%	28.6%	25.1%	26.8%

3. 業種別売上高 Revenue by Industry

(単位:百万円 Millions of yen)

	2002年3月期 Fiscal Year ended March 31, 2002				2003年3月期 Fiscal Year ended March 31, 2003			
	第1四半期 1st Q	第2四半期 2nd Q	第3四半期 3rd Q	第4四半期 4th Q	第1四半期 1st Q	第2四半期 2nd Q	第3四半期 3rd Q	第4四半期 4th Q
通信 / 放送 Telecommunications/ Broadcasting	27,145	39,338	28,170	36,133	16,290	16,591	18,640	25,873
構成比 % of Total Revenue (%)	37.3%	43.3%	35.9%	35.1%	29.6%	24.1%	28.4%	25.5%
対前年同期増減率 Y-Y Change (%)	+23.1%	+14.6%	-6.7%	+17.8%	-40.0%	-57.8%	-33.8%	-28.4%
電気 Electronics	7,239	7,914	7,170	8,841	5,708	9,775	9,926	13,165
構成比 % of Total Revenue (%)	9.9%	8.7%	9.1%	8.6%	10.4%	14.2%	15.1%	13.0%
対前年同期増減率 Y-Y Change (%)	+23.0%	-4.6%	-8.9%	-22.0%	-21.2%	+23.5%	+38.4%	+48.9%
製造等 Manufacturing (excluding electronics)	7,920	9,269	7,717	9,605	7,092	8,557	6,311	11,955
構成比 % of Total Revenue (%)	10.9%	10.2%	9.8%	9.3%	12.9%	12.4%	9.6%	11.8%
対前年同期増減率 Y-Y Change (%)	+81.6%	+39.2%	+16.0%	-20.1%	-10.4%	-7.7%	-18.2%	+24.5%
情報サービス Information Services	13,212	14,476	14,798	19,219	11,340	15,282	11,642	21,438
構成比 % of Total Revenue (%)	18.1%	15.9%	18.8%	18.7%	20.6%	22.2%	17.7%	21.1%
対前年同期増減率 Y-Y Change (%)	+42.6%	+10.1%	+0.1%	+21.1%	-14.2%	+5.6%	-21.3%	+11.5%
公共 Public Sector	3,203	3,736	4,616	10,021	2,941	3,818	2,356	8,676
構成比 % of Total Revenue (%)	4.4%	4.1%	5.9%	9.7%	5.3%	5.6%	3.6%	8.5%
対前年同期増減率 Y-Y Change (%)	+57.8%	+16.0%	+35.9%	+58.4%	-8.2%	+2.2%	-49.0%	-13.4%
商業 / 運輸 Commerce/ Transportation	2,598	1,122	2,230	3,725	666	1,075	503	4,011
構成比 % of Total Revenue (%)	3.6%	1.2%	2.8%	3.6%	1.2%	1.6%	0.8%	3.9%
対前年同期増減率 Y-Y Change (%)	+207.5%	-16.5%	+14.4%	+47.5%	-74.4%	-4.2%	-77.4%	+7.7%
金融 / 保険 Finance/ Insurance	6,584	8,819	7,070	8,441	5,245	8,267	5,089	13,238
構成比 % of Total Revenue (%)	9.0%	9.7%	9.0%	8.2%	9.5%	12.0%	7.8%	13.0%
対前年同期増減率 Y-Y Change (%)	+36.6%	+24.0%	+33.4%	-15.1%	-20.3%	-6.3%	-28.0%	+56.8%
その他 Others	4,958	6,177	6,780	7,040	5,715	5,398	11,195	3,202
構成比 % of Total Revenue (%)	6.8%	6.8%	8.6%	6.8%	10.4%	7.9%	17.0%	3.2%
対前年同期増減率 Y-Y Change (%)	-12.4%	+12.4%	+62.8%	+30.9%	+15.3%	-12.6%	+65.1%	-54.5%
合計 Total	72,864	90,854	78,555	103,030	55,001	68,767	65,664	101,563
構成比 % of Total Revenue (%)	100.0%	100.0%	100.0%	100.0%	100.0%	100.0%	100.0%	100.0%
対前年同期増減率 Y-Y Change (%)	+32.7%	+14.2%	+5.7%	+9.5%	-24.5%	-24.3%	-16.4%	-1.4%

<参考2> 単独情報 Nonconsolidated Operating Results

単体業績概況 Nonconsolidated Operating Results

(単位:百万円 Millions of yen)

	2000/3	2001/3	2002/3	2003/3	2004/3 (予) (Projected)	
					2003/9 (予) Projected	
売上高 Total Revenue	179,622	270,631	311,429	256,993	104,000	246,000
対前年同期増減率 Y-Y change (%)	+19.9%	+50.7%	+15.0%	-17.5%	-5.4%	-4.3%
システム System	163,154	249,176	283,973	224,676	-	-
対売上高構成比 % of Total Revenue	90.8%	92.1%	91.2%	87.4%	-	-
対前年同期増減率 Y-Y change (%)	+19.4%	+52.7%	+14.0%	-20.9%	-	-
サポート Support	16,467	21,454	27,455	32,317	-	-
売上構成比率 % of Total Revenue	9.2%	7.9%	8.8%	12.6%	-	-
対前年同期増減率 Y-Y change (%)	+24.8%	+30.3%	+28.0%	+17.7%	-	-
売上原価 Cost of Sales	147,113	219,408	263,609	216,567	87,100	207,300
対売上高構成比 % of Total Revenue (%)	81.9%	81.1%	84.6%	84.3%	83.8%	84.3%
対前年同期増減率 Y-Y change (%)	+20.7%	+49.1%	+20.1%	-17.8%	-7.4%	-4.3%
売上総利益 Gross Profit	32,509	51,222	47,820	40,425	16,900	38,700
対売上高構成比 % of Total Revenue (%)	18.1%	18.9%	15.4%	15.7%	16.3%	15.7%
対前年同期増減率 Y-Y change (%)	+16.5%	+57.6%	-6.6%	-15.5%	+6.5%	-4.3%
販売費および一般管理費 SG&A	26,551	32,340	36,643	32,605	16,000	32,000
対売上高構成比 % of Total Revenue (%)	14.8%	11.9%	11.8%	12.7%	15.4%	13.0%
対前年同期増減率 Y-Y change (%)	+19.6%	+21.8%	+13.3%	-11.0%	-5.0%	-1.9%
営業利益 Operating Income	5,957	18,882	11,176	7,820	900	6,600
対売上高構成比 % of Total Revenue (%)	3.3%	7.0%	3.6%	3.0%	0.9%	2.7%
対前年同期増減率 Y-Y change (%)	+4.4%	+217.0%	-40.8%	-30.0%	-193.3%	-15.6%
経常利益 Ordinary Income	6,594	19,609	15,206	12,800	5,300	11,500
対売上高構成比 % of Total Revenue (%)	3.7%	7.2%	4.9%	5.0%	5.1%	4.7%
対前年同期増減率 Y-Y change (%)	+9.7%	+197.4%	-22.4%	-15.8%	+51.2%	-10.2%
税金等調整前当期利益 Income before Income Taxes	6,611	19,097	16,727	11,445	5,200	11,000
対売上高構成比 % of Total Revenue (%)	3.7%	7.1%	5.4%	4.5%	5.0%	4.5%
対前年同期増減率 Y-Y change (%)	+8.4%	+188.9%	-12.4%	-31.6%	+80.2%	-3.9%
当期純利益 Net Income	3,762	11,057	11,020	8,000	4,600	7,900
対売上高構成比 % of Total Revenue (%)	2.1%	4.1%	3.5%	3.1%	4.4%	3.2%
対前年同期増減率 Y-Y change (%)	+75.1%	+193.9%	-0.3%	-27.4%	+43.1%	-1.3%

ハード・ソフト・サービス比率 Sales Breakdown by Hardware/ Software/ Service

	2001/3	2002/3	2003/3
ハードウェア Hardware	64.3%	55.8%	50.2%
ソフトウェア Software	15.6%	15.8%	15.6%
サービス Service	20.1%	28.4%	34.3%
開発ソフトウェア Custom Application Development	4.1%	7.8%	7.3%
ハード保守 Hardware Support	8.0%	9.0%	12.6%
ソフト保守 Software Support	3.4%	4.7%	7.2%
その他 Others	4.7%	6.9%	7.3%
合計 Total	100.0%	100.0%	100.0%

主要製品別売上高 Sales Breakdown by Major Product

	2001/3	2002/3	2003/3
サン・マイクロシステムズ Sun Microsystems	29.6%	22.0%	15.3%
シスコシステムズ Cisco Systems	13.2%	11.4%	12.1%
オラクル Oracle	4.3%	4.9%	3.2%
その他	52.9%	61.7%	69.4%
合計 Total	100.0%	100.0%	100.0%