



ITOCHU Techno-Solutions Corporation (CTC) is a comprehensive IT services company that partners with its customers. From consulting to design, development and construction, operational and maintenance support, CTC combines sophisticated IT solutions and cloud services to find solutions to customer issues. Providing optimum services in all fields including communication, broadcasting, manufacturing, finance, logistics and retail, public services, life sciences, science and engineering.

Our Strength

73% **7,350** ENGINEERS

Engineers constitute about 73% of the 10,120 CTC Group employees worldwide

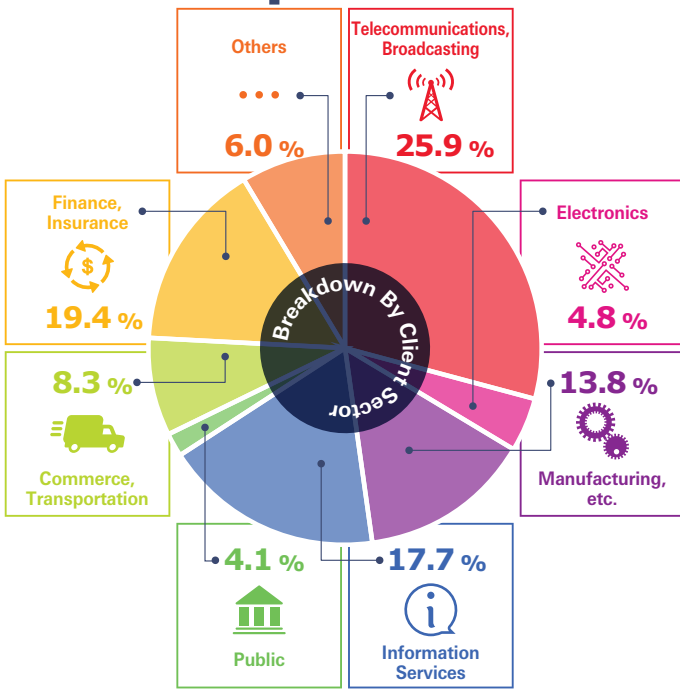
300

Partnerships with more than 300 vendors enable CTC to offer the best-of-breed technologies

(Year ended March 31, 2023)

SALES \$4.2B

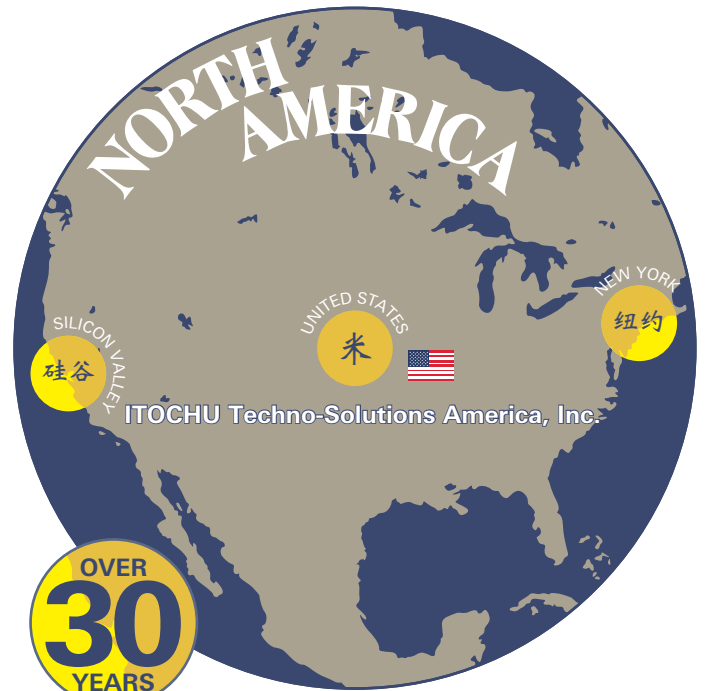
* 1USD = 135JPY



Global Presence



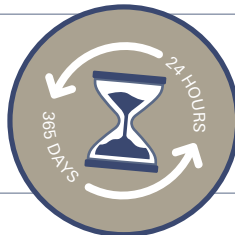
Focused on ASEAN and North America, CTC boosts overseas expansion and supports customer businesses across the globe.



R&D achievements in Silicon Valley

24^x365

Support Providing maintenance support all over Japan



SDGs Contributing to build a sustainable society with IT.



CTC Offerings

CTC provides optimal IT solutions and services with the latest technologies.

DX

Supporting companies' digital transformation through data analysis, edge computing and other advanced IT.



Cloud Service

Based on technical capability developed over many years of building systems, CTC provides multi-cloud services and the CUVICmc2 cloud service specialized in backbone systems.



5G

Technological capabilities developed through building large scale networks that support social infrastructure. Supporting 5G networks with SDN/NFV.



AI

Provides AI-related IT infrastructure, AI solutions to develop human resources, and system verification services in multi-vendor environments.



IoT

A platform for real-time data collection from sensors attached to equipment and devices, as well as storage, management, and analysis of the data.



System Operation & Outsourcing

The Remote Operation Center (ROC) monitors customer IT systems remotely and reduces operational tasks through automated technologies.



System Verification

The largest of its kind in Japan, the CTC multi-vendor Technical Solution Center evaluates and verifies systems in the actual environment.



Network

CTC has honed its technical strength by building large-scale networks that build social infrastructure. Supporting 5G networks with SDN/NFV.



Infrastructure Service

By combining and verifying the latest technologies and a wide variety of products, CTC provides the optimum IT environment corresponding to customer needs.



Application Development

CTC practices agile development to shorten development time and also provides the OutSystems low-code development platform in the ASEAN region.



Data Center

With a 30-year performance record and equipped with multi-carrier and multi-cloud connections, this is the platform for the age of digital transformation (DX).



Security

In addition to providing the latest security systems, the Security Operations Center (SOC) remotely monitors the status of security equipment.



Maintenance Support Service

CTC dispatches system maintenance engineers to all parts of the country and deploys multi-vendor support 24 hours a day, 365 days a year.



Science & Engineering Solution

Uses analytical and simulation technologies to resolve a range of issues including energy and environment, manufacturing, CAE, and social infrastructure.



Open Innovation

Corporate Venture Capital (CVC) aims to create business promptly through innovation while the DEJIMA exclusive space is where we create ideas together with custom-



Renewable Energy

The E-PLSM IoT cloud service manages the use of renewable energy. CTC is developing technologies for estimating the output of wind and solar energy.



RPA

Provides total support from selection of tasks and trial calculation of effect to RPA implementation, operation and integration with existing systems.



Life Science

Cutting-edge IT, based on deep understanding and experience of pharmaceutical and life sciences. Provides AI-powered data analysis solution

